

SEGMENT 2 DRIVER EDUCATION

risk awareness ————— fact sheet 1

Risk is the chance of injury, damage, loss or death.

For **16 & 17** year old drivers...



What are 4 examples of risky driving behaviors?

1 out of 8 (11%)

drivers will be involved in a crash during the first

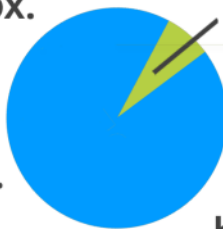
3 YEARS of driving



1 out of 11

of 16 yr old drivers...

Approx.



9%

...will have a **serious** crash before his/her 17th birthday

36

young drivers in Michigan are involved in a fatal crash each year



For every 2 miles driven, the average driver makes **200 observations**, **40 decisions**, and **one mistake**.

Once every **500 miles**, one of those decisions leads to a near-collision



If you were the driver and survived a fatal crash caused by you, how would this affect your life?

Due to **lack of driving experience**, the largest category of error in **young driver fatal crashes** is **SPEEDING**

SPEED LIMIT
45

SEGMENT 2 DRIVER EDUCATION

risk awareness ————— fact sheet 2

WHEN DO FATAL CRASHES OCCUR FOR YOUNG DRIVERS?



Why is 9 pm to Midnight a dangerous time period for young driver fatal crashes?



Why do young driver fatal crashes occur in May?



Why is the "after school" time period the most dangerous for young driver fatal crashes?



The *most dangerous* time of day is the three-hour period after school (2:00 PM - 5:00 PM)

17% between 9:00 PM & Midnight...



...13% between Midnight & 6:00 AM



51% in daylight

27% in the dark on unlit roads

The *highest* number of deaths (38) in May & October



33% on Friday & Saturday



SEGMENT 2 DRIVER EDUCATION

risk awareness ————— fact sheet 3

WHERE DO FATAL CRASHES OCCUR FOR YOUNG DRIVERS?



A defensive driver anticipates danger to avoid crashes. Give examples of how you can drive defensively in these areas?



How can you reduce your risk when driving in these areas?

FOR YOUNG DRIVERS, FATAL CRASHES OCCUR:

97% on roadways with a speed limit of 55 MPH or less

76% on rural area roads

69% on sections of roadway where no traffic control devices are in effect

53% while driving on straight roads

20% at stop signs

14% on roadways with a speed limit of 35 MPH or less

11% on roadways where traffic control devices are in effect

SEGMENT 2 DRIVER EDUCATION

risk awareness ————— fact sheet 4

YOUNG DRIVERS + PASSENGERS = INCREASED RISK

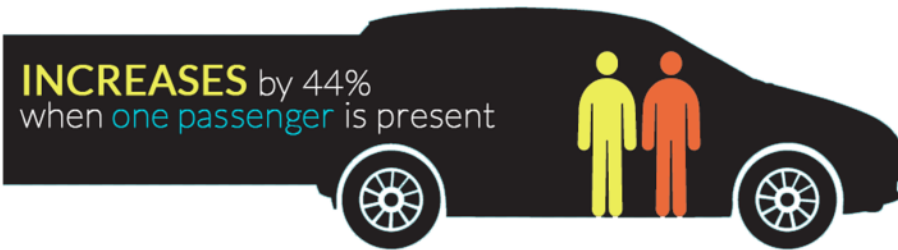
A 16- or 17-year-old driver's **RISK OF BEING KILLED IN A CRASH** increases when there are young passengers in the vehicle

The driver dies in approx.



of all fatal crashes involving novice drivers

INCREASES by 44% when **one passenger** is present



DOUBLES (88%) when **two passengers** are present



QUADRUPLES (132%) when **three or more passengers** are present



In fatal crashes involving young drivers, **2/3** of those killed are other passengers, drivers, bicyclists, or pedestrians, with occupants in the young driver's vehicle accounting for **46%** of the fatalities



- You're driving two friends home from school. Everyone is buckled up as you requested. As you drive, the friend in the back seat unbuckles his/her seat belt and reaches across the front seat to turn up the radio. The friend in front turns around and starts tossing books into the back seat. What do you do?
- ② What rules or limitations will you create when you drive with other passengers?

SEGMENT 2 DRIVER EDUCATION

risk awareness ————— fact sheet 5

WHAT TYPE OF VEHICLE(S) ARE YOUNG DRIVERS DRIVING?

Over half

of young drivers are not driving the types of vehicles recommended for them:

Midsize &  Large Passenger 



In fatal crashes involving young drivers, of the vehicles driven **50%** are 10 years old or older & **82%** are 6 years old or older



Teenage vehicle owners are likely to:

- Drive more miles
- Take more risks
- Receive more traffic violations
- Be involved in more crashes

than those who do not own a vehicle and drive their parents



According to the **Insurance for Highway Safety** before purchasing a vehicle you should **research** the vehicles crashworthiness

- ① Your friend has just bought a new car and wants to take you for a ride. He or she is driving through your neighborhood at 20 mph over the speed limit. What would you do?
 - ② When researching your vehicles crashworthiness, what safety features are you looking for?
 - ③ What measures can you take to safely drive an older vehicle?
-

Safe Vehicle Resources:

<http://www.iihs.org/ratings/default.aspx> | <http://www.safecar.gov/>

SEGMENT 2 DRIVER EDUCATION

risk awareness ————— fact sheet 6

WHAT TYPES OF FATAL CRASHES ARE YOUNG DRIVERS INVOLVED IN?

- ① List possible reasons why there are fewer single-vehicle fatal crashes involving young drivers.
- ② What are some possible errors and/or risks that are causing more multi-vehicle vs. single-vehicle fatal crashes involving young drivers?
- ③ List possible errors that could cause a young driver to be involved in a fatal rear-end crash.
- ④ List possible errors that could cause a young driver to be involved in a head-on collision.



Involved in Single
Vehicle Crashes

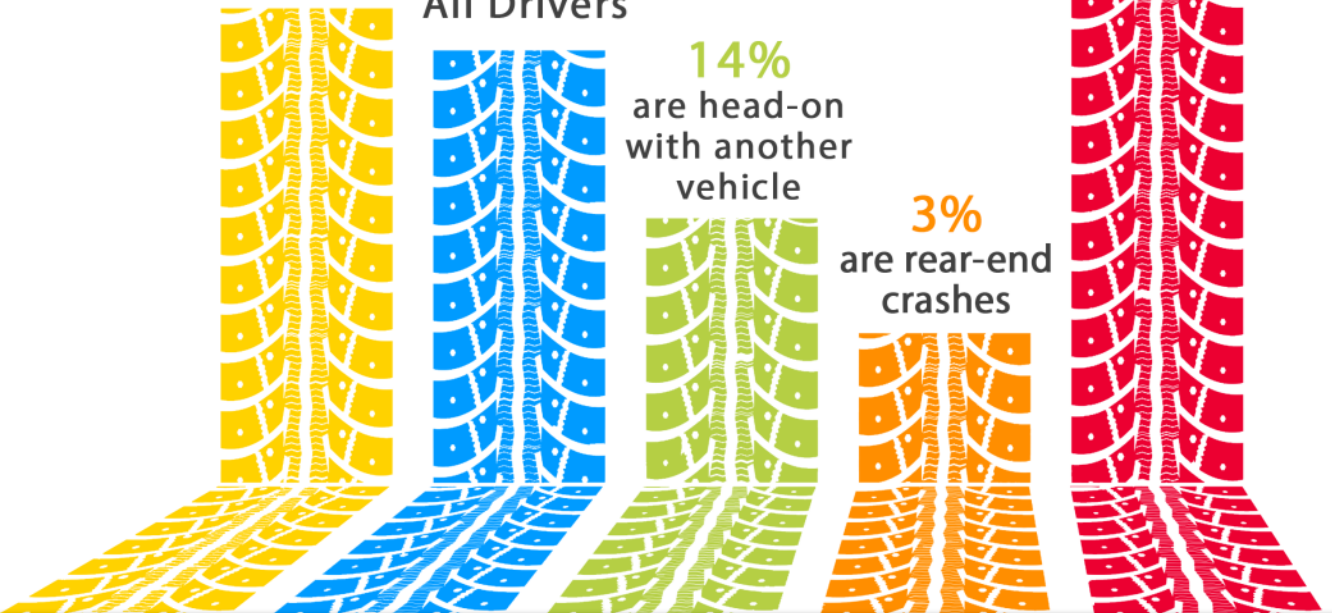
36% vs. 34%
Young

All Drivers

64%
involve two or
more vehicles

14%
are head-on
with another
vehicle

3%
are rear-end
crashes

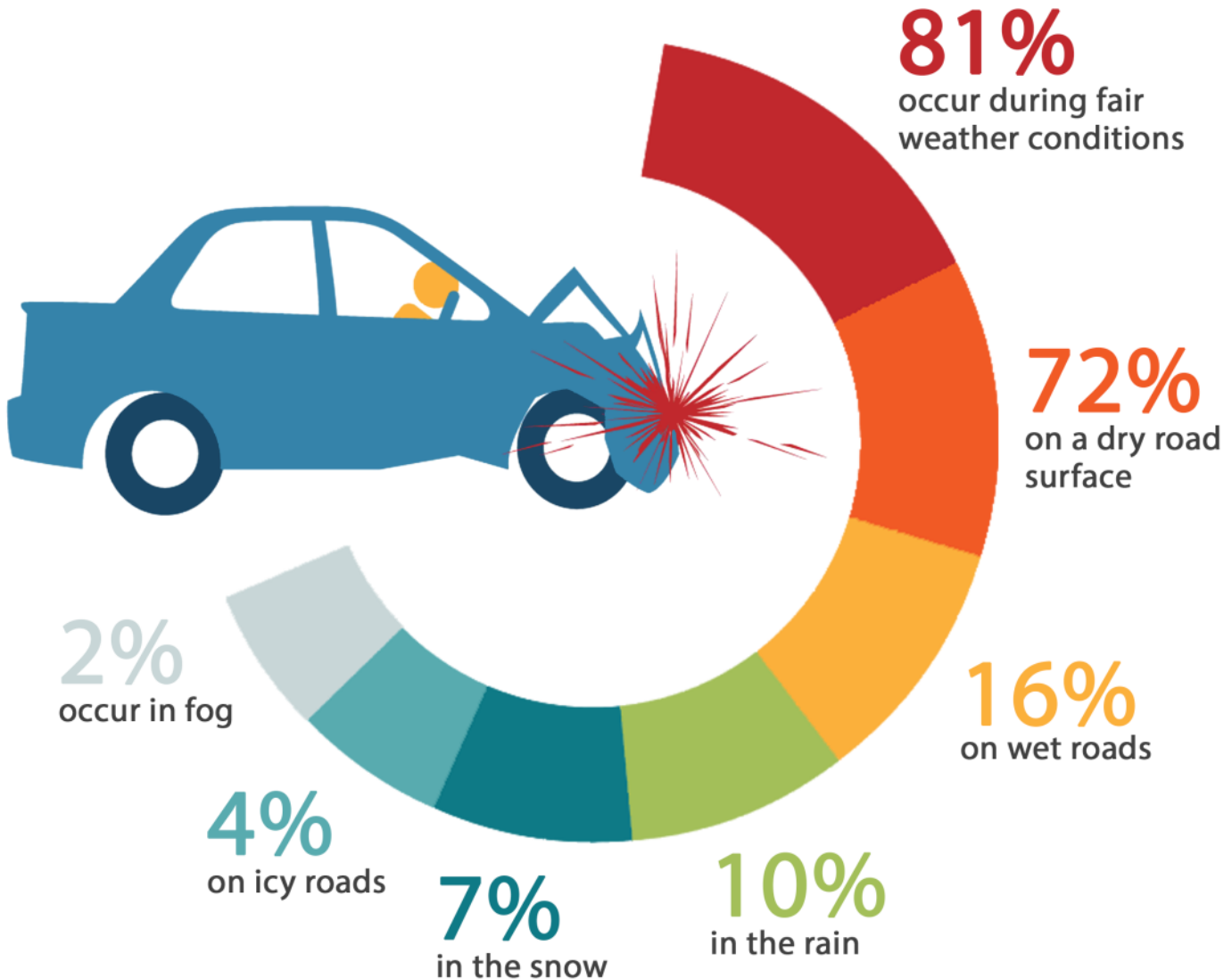


SEGMENT 2 DRIVER EDUCATION

risk awareness ————— fact sheet 7

WHAT ARE THE ROAD AND WEATHER CONDITIONS WHEN FATAL CRASHES OCCUR INVOLVING YOUNG DRIVERS?

- ① What strategies can you use to manage visibility, time and space in inclement weather conditions?
- ② What are some reasons why a majority of young driver fatal crashes occur on dry road surfaces during fair weather conditions?
- ③ What can you do to help prevent this from occurring?



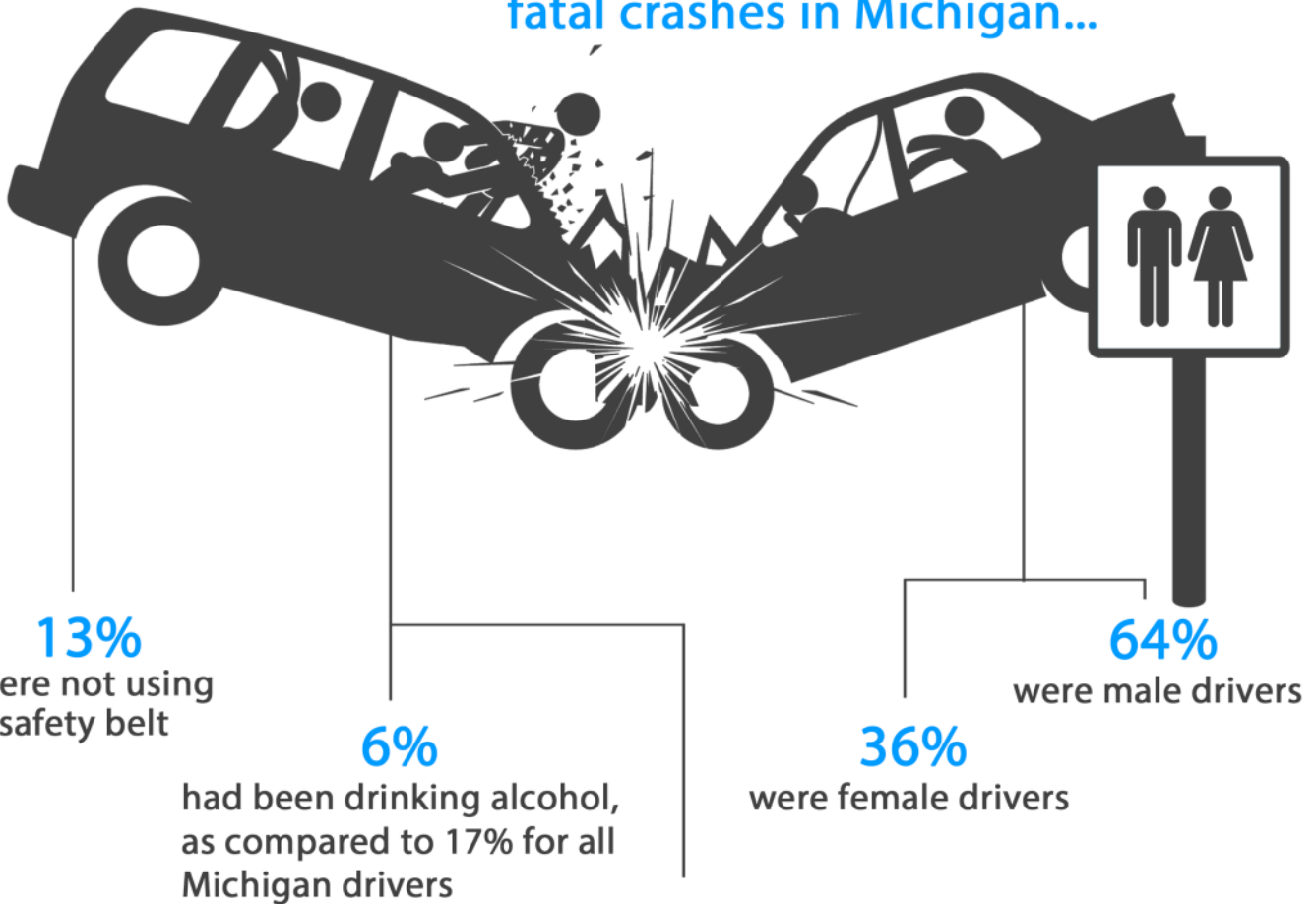
SEGMENT 2 DRIVER EDUCATION

risk awareness ————— fact sheet 8

WHAT OTHER FACTORS CONTRIBUTE TO YOUNG DRIVER FATAL CRASHES?

- ② You're riding home from a party with a friend who agreed to be the designated driver. Another friend in the car asks the driver how many beers he/she had. The driver answers, "I only had two. I know when to stop." What would you do?
- ② What are some possible reasons why young drivers do not wear their safety belt?

Young drivers involved in fatal crashes in Michigan...



However, young drivers account for only 6.9% of licensed Michigan drivers

SEGMENT 2 DRIVER EDUCATION

risk awareness ————— fact sheet 9

HOW BIG A FACTOR ARE DISTRACTIONS?



Why do young drivers engage in the risky behavior of distracted driving?



How will you address this issue once you receive your license?



How can you persuade others to not text or talk on their cell phones while driving?



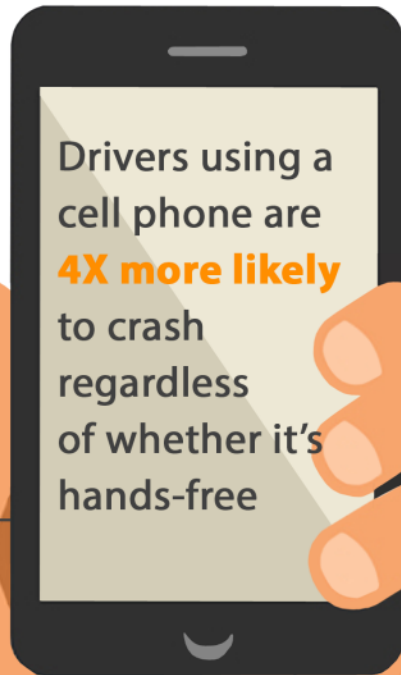
5 seconds is the average time your eyes are off the road while texting. When traveling at **55mph**, that's enough time to cover the length of a football field blindfolded



Cell phone use *impairs* a driver's ability to handle the changing driving environment, similar to a driver with a **.08 Blood Alcohol Content**



Reading a text message or texting is even more impaired than talking on a cell phone. This is called **DRIVING WHILE INTOXICATED**



Distractions are compounded by **inexperience**; a panicked reaction or overreaction is *more likely*



young drivers' brains may not fully be developed until the **AGE OF 25**



Brain power **DECREASES by 40%** when a driver listens to someone talk, whether it is a passenger or the radio